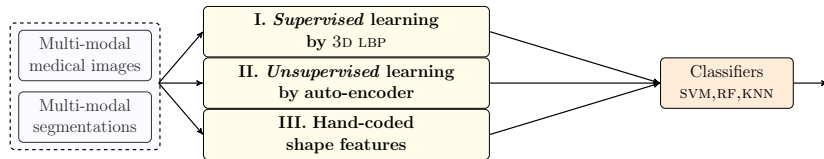
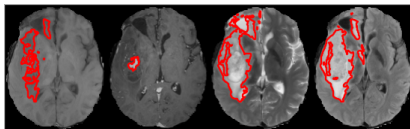


# Radiogenomics: quantitative brain tumor texture analysis with respect to genomic classes – Esther Alberts, TUM

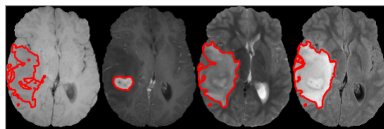


Set of inputs -----> Feature extraction -----> Feature fusion -----> Classification

<b>Images</b>	MR brain tumor images tumor segmentations	T1, T1c, T2, FLAIR edema, active core, necrotic core
<b>Labels</b>	genetic subclasses	CIMP codel, CIMP non-codel, CIMP neg



CIMP codel



CIMP non-codel